



FLOOR PLANS



GROUND FLOOR PLAN

Unit No.	Type	Carpet Area as per RERA (Sq.ft)	Additional Carpet Area (Sq.ft)	Total Area (Sq.ft)
001	Retail	1883	0	1883
002	Retail	2643	0	2643
003	Retail	1287	0	1287
004	Retail	952	0	952
005	Retail	1387	0	1387



- Disclaimer:**
1. Dimensions mentioned in floor plans are for unfinished room and the given dimensions exclude plaster, tile cladding and skirting thickness .
  2. Balcony, Terrace and Common Toilet are not part of RERA carpet area, It is mentioned as additional carpet area.
  3. Column location, offsets and sizes will be as per working detail drawings and may change as per sites condition.
  4. Internal block work and column offsets are included in RERA carpet area.
  5. The duct doors of the plumbing and AC ducts on the side of the showrooms and offices shall be made accessible to the maintenance staff whenever required.
  6. The owners shall not permanently close the duct doors through any kind of wall cladding / panelling, as these ducts are required to be accessed for AC outdoor units maintenance and repairs of individual shops and offices as well.



1<sup>st</sup> FLOOR PLAN

Unit No.	Type	Carpet Area as per RERA (Sq.ft)	Additional Carpet Area (Sq.ft)	Total Area (Sq.ft)
101	Retail	3368	0	3368
102	Retail	2713	0	2713
103	Retail	1143	0	1143
104	Retail	898	0	898



- Disclaimer:**
- 1. Dimensions mentioned in floor plans are for unfinished room and the given dimensions exclude plaster, tile cladding and skirting thickness .
  - 2. Balcony, Terrace and Common Toilet are not part of RERA carpet area, It is mentioned as additional carpet area.
  - 3. Column location, offsets and sizes will be as per working detail drawings and may change as per sites condition.
  - 4. Internal block work and column offsets are included in RERA carpet area.
  - 5. The duct doors of the plumbing and AC ducts on the side of the showrooms and offices shall be made accessible to the maintenance staff whenever required.
  - 6. The owners shall not permanently close the duct doors through any kind of wall cladding / panelling, as these ducts are required to be accessed for AC outdoor units maintenance and repairs of individual shops and offices as well.



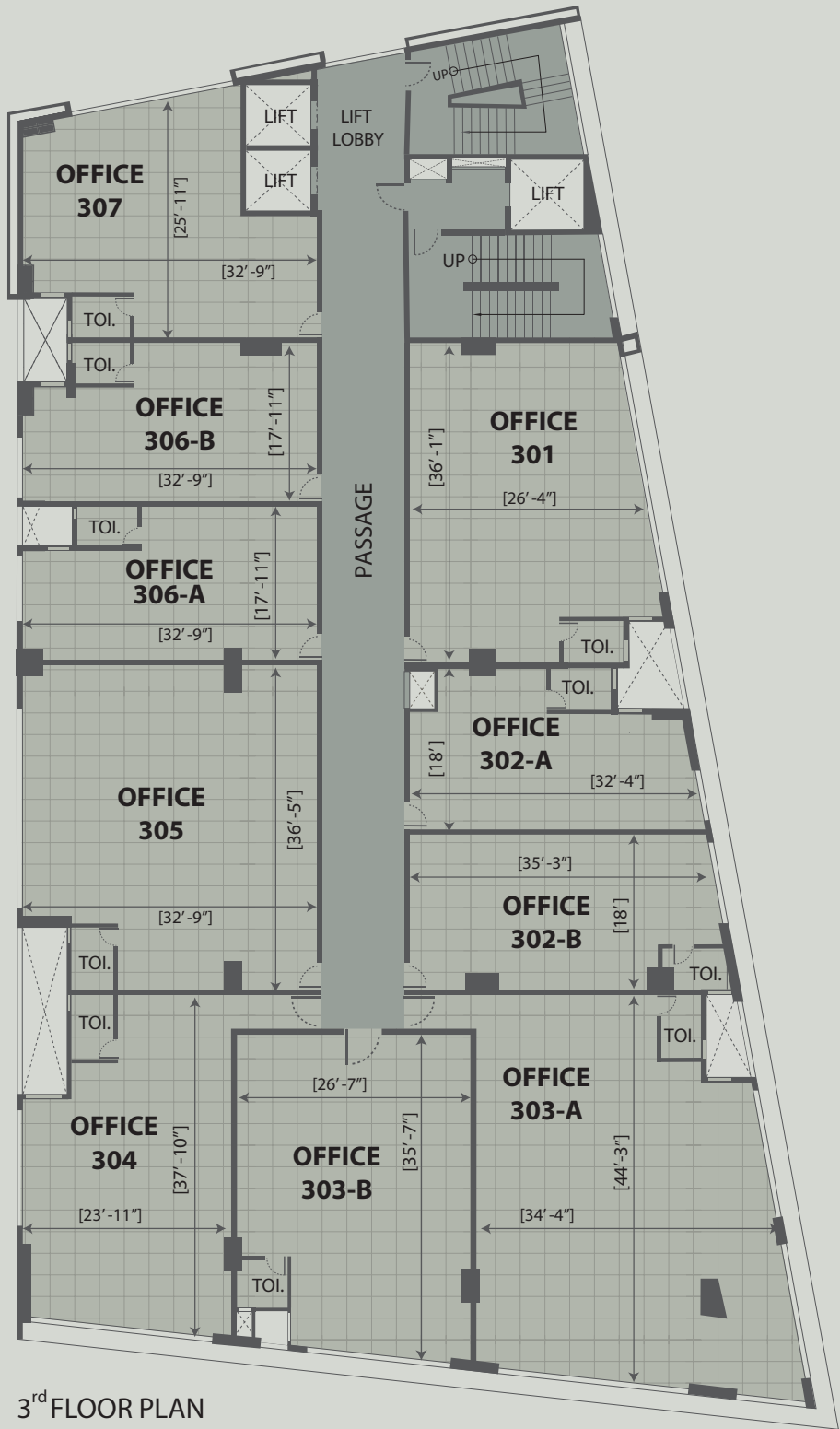
2<sup>nd</sup> FLOOR PLAN

Unit No.	Type	Carpet Area as per RERA (Sq.ft)	Additional Carpet Area (Sq.ft)	Total Area (Sq.ft)
201	Retail	898	0	898
202	Retail	1169	0	1169
203	Retail	1913	0	1913
204	Retail	1372	0	1372
205	Retail	1148	0	1148
206	Retail	1143	0	1143
207	Retail	614	0	614



**Disclaimer:**

1. Dimensions mentioned in floor plans are for unfinished room and the given dimensions exclude plaster, tile cladding and skirting thickness .
2. Balcony, Terrace and Common Toilet are not part of RERA carpet area, It is mentioned as additional carpet area.
3. Column location, offsets and sizes will be as per working detail drawings and may change as per sites condition.
4. Internal block work and column offsets are included in RERA carpet area.
5. The duct doors of the plumbing and AC ducts on the side of the showrooms and offices shall be made accessible to the maintenance staff whenever required.
6. The owners shall not permanently close the duct doors through any kind of wall cladding / panelling, as these ducts are required to be accessed for AC outdoor units maintenance and repairs of individual shops and offices as well.

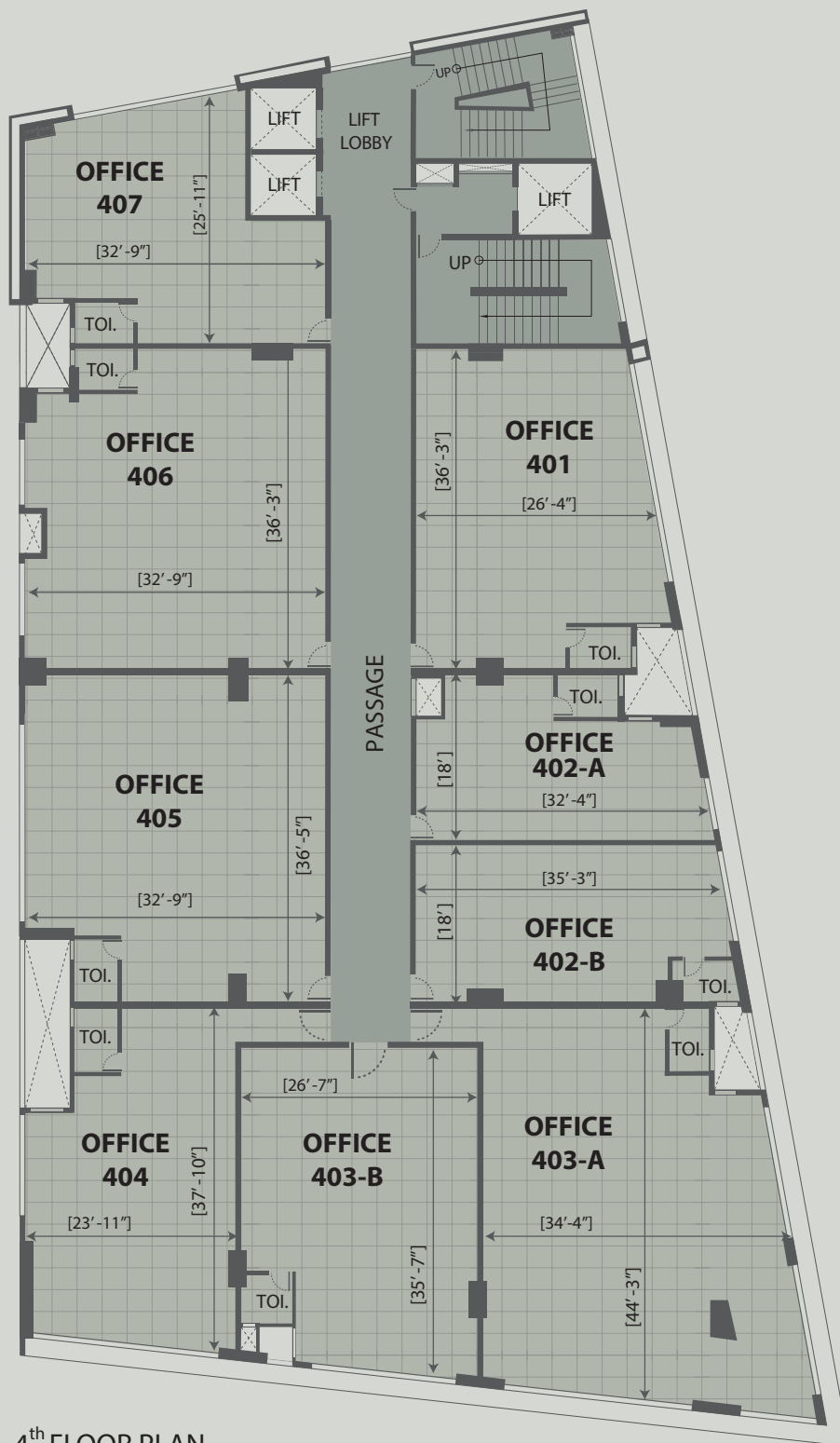


3<sup>rd</sup> FLOOR PLAN

Unit No.	Type	Carpet Area as per RERA (Sq.ft)	Additional Carpet Area (Sq.ft)	Total Area (Sq.ft)
301	Office	943	0	943
302-A	Office	521	0	521
302-B	Office	634	0	634
303-A	Office	1439	0	1439
303-B	Office	906	0	906
304	Office	894	0	894
305	Office	1148	0	1148
306-A	Office	557	0	557
306-B	Office	557	0	557
307	Office	698	0	698



- Disclaimer:**
- Dimensions mentioned in floor plans are for unfinished room and the given dimensions exclude plaster, tile cladding and skirting thickness .
  - Balcony, Terrace and Common Toilet are not part of RERA carpet area, It is mentioned as additional carpet area.
  - Column location, offsets and sizes will be as per working detail drawings and may change as per sites condition.
  - Internal block work and column offsets are included in RERA carpet area.
  - The duct doors of the plumbing and AC ducts on the side of the showrooms and offices shall be made accessible to the maintenance staff whenever required.
  - The owners shall not permanently close the duct doors through any kind of wall cladding / panelling, as these ducts are required to be accessed for AC outdoor units maintenance and repairs of individual shops and offices as well.



4<sup>th</sup> FLOOR PLAN

Unit No.	Type	Carpet Area as per RERA (Sq.ft)	Additional Carpet Area (Sq.ft)	Total Area (Sq.ft)
401	Office	943	0	943
402-A	Office	521	0	521
402-B	Office	634	0	634
403-A	Office	1439	0	1439
403-B	Office	906	0	906
404	Office	894	0	894
405	Office	1148	0	1148
406	Office	1143	0	1143
407	Office	698	0	698



Disclaimer:

- Dimensions mentioned in floor plans are for unfinished room and the given dimensions exclude plaster, tile cladding and skirting thickness .
- Balcony, Terrace and Common Toilet are not part of RERA carpet area, It is mentioned as additional carpet area.
- Column location, offsets and sizes will be as per working detail drawings and may change as per sites condition.
- Internal block work and column offsets are included in RERA carpet area.
- The duct doors of the plumbing and AC ducts on the side of the showrooms and offices shall be made accessible to the maintenance staff whenever required.
- The owners shall not permanently close the duct doors through any kind of wall cladding / panelling, as these ducts are required to be accessed for AC outdoor units maintenance and repairs of individual shops and offices as well.



5<sup>th</sup> FLOOR PLAN

Unit No.	Type	Carpet Area as per RERA (Sq.ft)	Additional Carpet Area (Sq.ft)	Total Area (Sq.ft)
501	Office	391	0	391
502	Office	431	0	431
503	Office	632	0	632
504	Office	634	0	634
505	Office	1315	584	1899
506	Office	1283	88	1371
507	Office	1261	0	1261
508	Office	525	0	525
509	Office	489	0	489
510	Office	691	0	691



**Disclaimer:**

(1). Dimensions mentioned in floor plans are for unfinished room and the given dimensions exclude plaster, tile cladding and skirting thickness. (2). Amenities on 5th floor are not Common Amenities of the building and will be owned by Arvind. (3). Other unit holders can use these amenities at Arvind's Description. (4). Column location, offsets and sizes will be as per working detail drawings and may change as per sites condition. (5). Internal block work and column offsets are included in RERA carpet area. (6). Balcony, Terrace and Common Toilet are not part of RERA carpet area, It is mentioned as additional carpet area. (7). The duct doors of the plumbing and AC ducts on the side of the showrooms and offices shall be made accessible to the maintenance staff whenever required. (8). The owners shall not permanently close the duct doors through any kind of wall cladding / panelling, as these ducts are required to be accessed for AC outdoor units maintenance and repairs of individual shops and offices as well.



6<sup>th</sup> FLOOR PLAN

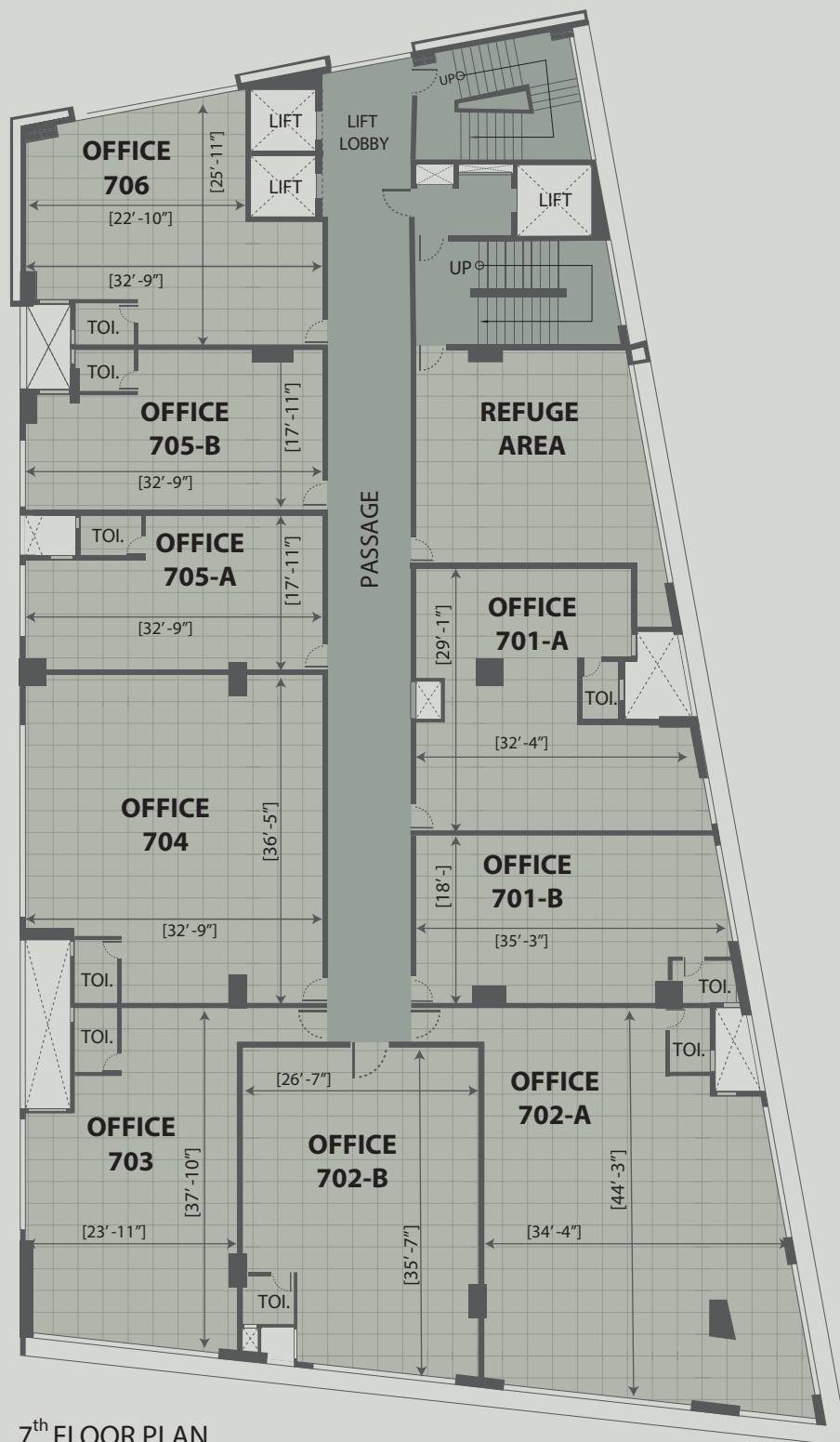
Unit No.	Type	Carpet Area as per RERA (Sq.ft)	Additional Carpet Area (Sq.ft)	Total Area (Sq.ft)
601	Office	943	0	943
602	Office	1169	0	1169
603	Office	1457	0	1457
604	Office	1142	0	1142
605	Office	1148	0	1148
606-A	Office	557	0	557
606-B	Office	557	0	557
607	Office	698	0	698



**Disclaimer:**

1. Dimensions mentioned in floor plans are for unfinished room and the given dimensions exclude plaster, tile cladding and skirting thickness .
2. Balcony, Terrace and Common Toilet are not part of RERA carpet area, It is mentioned as additional carpet area.
3. Column location, offsets and sizes will be as per working detail drawings and may change as per sites condition.
4. Internal block work and column offsets are included in RERA carpet area.
5. The duct doors of the plumbing and AC ducts on the side of the showrooms and offices shall be made accessible to the maintenance staff whenever required.
6. The owners shall not permanently close the duct doors through any kind of wall cladding / panelling, as these ducts are required to be accessed for AC outdoor units maintenance and repairs of individual shops and offices as well.





7<sup>th</sup> FLOOR PLAN

Unit No.	Type	Carpet Area as per RERA (Sq.ft)	Additional Carpet Area (Sq.ft)	Total Area (Sq.ft)
701-A	Office	791	0	791
701-B	Office	634	0	634
702-A	Office	1439	0	1439
702-B	Office	906	0	906
703	Office	894	0	894
704	Office	1148	0	1148
705-A	Office	557	0	557
705-B	Office	557	0	557
706	Office	698	0	698

**Disclaimer:**

1. Dimensions mentioned in floor plans are for unfinished room and the given dimensions exclude plaster, tile cladding and skirting thickness .
2. Balcony, Terrace and Common Toilet are not part of RERA carpet area, It is mentioned as additional carpet area.
3. Column location, offsets and sizes will be as per working detail drawings and may change as per sites condition.
4. Internal block work and column offsets are included in RERA carpet area.
5. The duct doors of the plumbing and AC ducts on the side of the showrooms and offices shall be made accessible to the maintenance staff whenever required.
6. The owners shall not permanently close the duct doors through any kind of wall cladding / panelling, as these ducts are required to be accessed for AC outdoor units maintenance and repairs of individual shops and offices as well.





8<sup>th</sup> & 9<sup>th</sup> FLOOR PLAN

Unit No.	Type	Carpet Area as per RERA (Sq.ft)	Additional Carpet Area (Sq.ft)	Total Area (Sq.ft)
801 & 901	Office	943	0	943
802 & 902	Office	1169	0	1169
803-A & 903-A	Office	1439	0	1439
803-B & 903-B	Office	906	0	906
804 & 904	Office	894	0	894
805 & 905	Office	1148	0	1148
806-A & 906-A	Office	557	0	557
806-B & 906-B	Office	557	0	557
807 & 907	Office	698	0	698



**Disclaimer:**

1. Dimensions mentioned in floor plans are for unfinished room and the given dimensions exclude plaster, tile cladding and skirting thickness .
2. Balcony, Terrace and Common Toilet are not part of RERA carpet area, It is mentioned as additional carpet area.
3. Column location, offsets and sizes will be as per working detail drawings and may change as per sites condition.
4. Internal block work and column offsets are included in RERA carpet area.
5. The duct doors of the plumbing and AC ducts on the side of the showrooms and offices shall be made accessible to the maintenance staff whenever required.
6. The owners shall not permanently close the duct doors through any kind of wall cladding / panelling, as these ducts are required to be accessed for AC outdoor units maintenance and repairs of individual shops and offices as well.

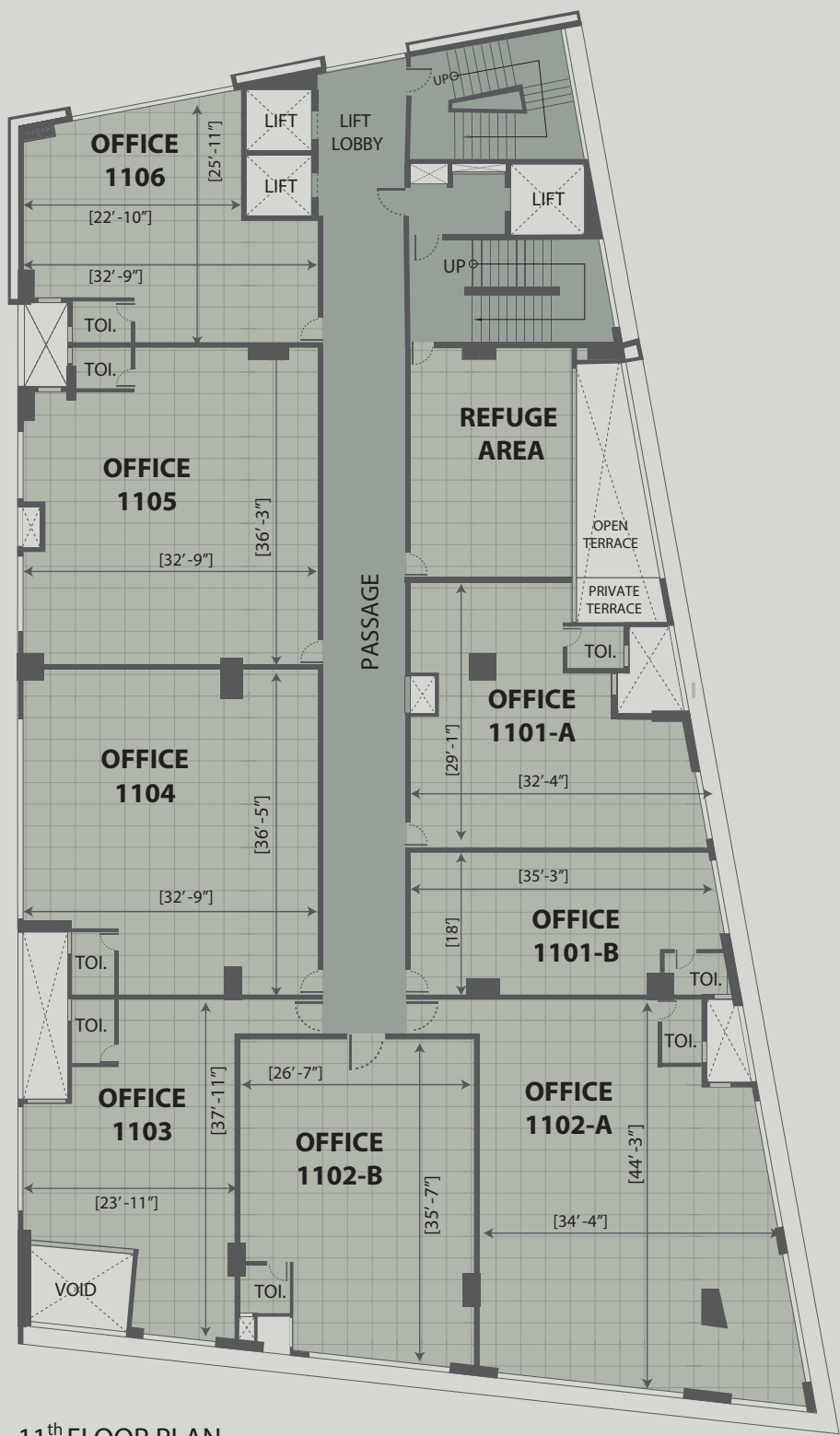


10<sup>th</sup> FLOOR PLAN

Unit No.	Type	Carpet Area as per RERA (Sq.ft)	Additional Carpet Area (Sq.ft)	Total Area (Sq.ft)
1001	Office	943	0	943
1002	Office	1169	0	1169
1003	Office	1913	0	1913
1004	Office	1240	122	1362
1005	Office	1148	0	1148
1006-A	Office	557	0	557
1006-B	Office	557	0	557
1007	Office	698	0	698



- Disclaimer:**
1. Dimensions mentioned in floor plans are for unfinished room and the given dimensions exclude plaster, tile cladding and skirting thickness .
  2. Balcony, Terrace and Common Toilet are not part of RERA carpet area, It is mentioned as additional carpet area.
  3. Column location, offsets and sizes will be as per working detail drawings and may change as per sites condition.
  4. Internal block work and column offsets are included in RERA carpet area.
  5. The duct doors of the plumbing and AC ducts on the side of the showrooms and offices shall be made accessible to the maintenance staff whenever required.
  6. The owners shall not permanently close the duct doors through any kind of wall cladding / panelling, as these ducts are required to be accessed for AC outdoor units maintenance and repairs of individual shops and offices as well.

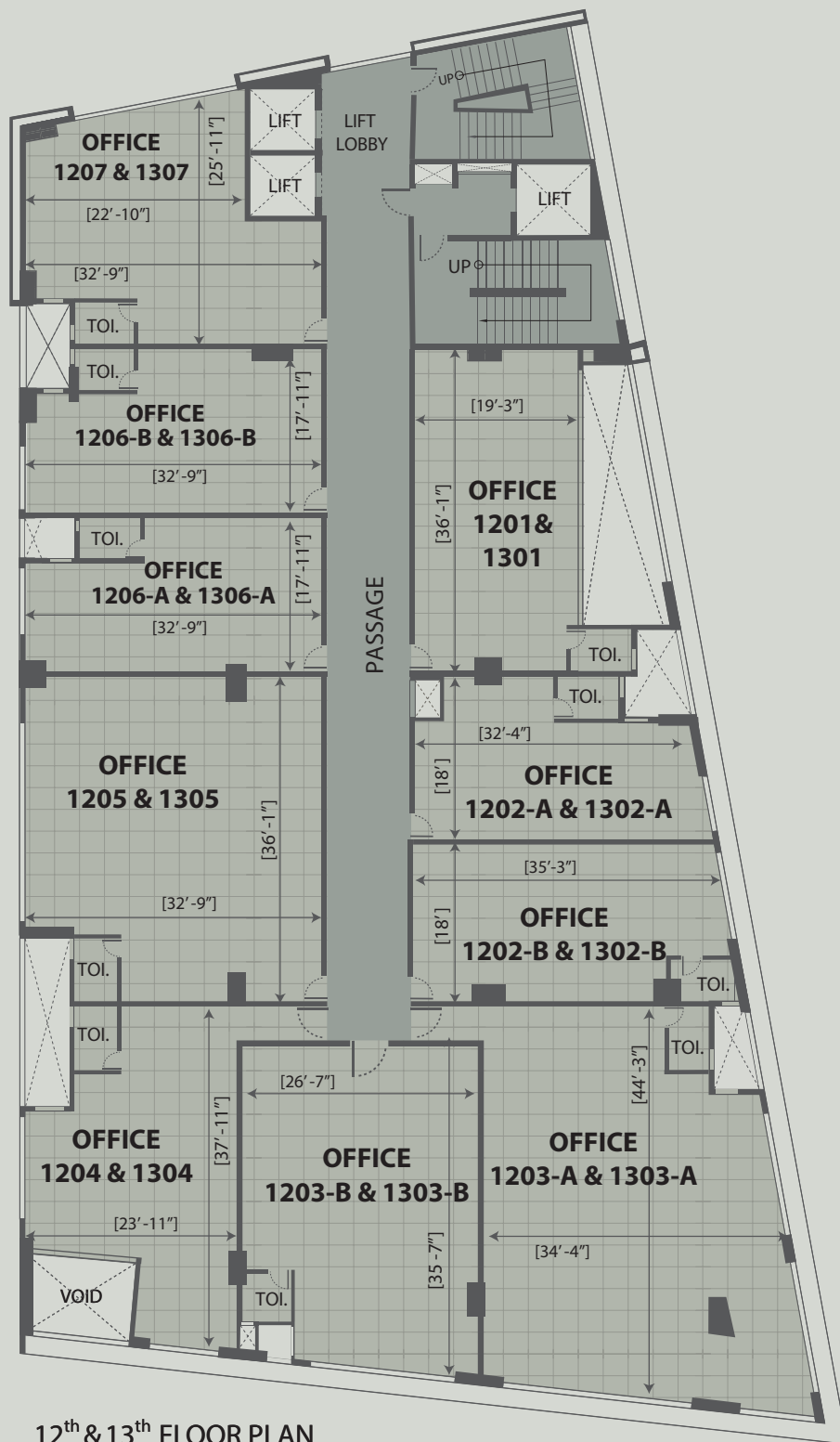


11<sup>th</sup> FLOOR PLAN

Unit No.	Type	Carpet Area as per RERA (Sq.ft)	Additional Carpet Area (Sq.ft)	Total Area (Sq.ft)
1101-A	Office	761	56	816
1101-B	Office	634	0	634
1102-A	Office	1439	0	1439
1102-B	Office	906	0	906
1103	Office	762	0	762
1104	Office	1148	0	1148
1105	Office	1143	0	1143
1106	Office	698	0	698



- Disclaimer:**
1. Dimensions mentioned in floor plans are for unfinished room and the given dimensions exclude plaster, tile cladding and skirting thickness .
  2. Balcony, Terrace and Common Toilet are not part of RERA carpet area, It is mentioned as additional carpet area.
  3. Column location, offsets and sizes will be as per working detail drawings and may change as per sites condition.
  4. Internal block work and column offsets are included in RERA carpet area.
  5. The duct doors of the plumbing and AC ducts on the side of the showrooms and offices shall be made accessible to the maintenance staff whenever required.
  6. The owners shall not permanently close the duct doors through any kind of wall cladding / panelling, as these ducts are required to be accessed for AC outdoor units maintenance and repairs of individual shops and offices as well.



12<sup>th</sup> & 13<sup>th</sup> FLOOR PLAN

Unit No.	Type	Carpet Area as per RERA (Sq.ft)	Additional Carpet Area (Sq.ft)	Total Area (Sq.ft)
1201 & 1301	Office	720	0	720
1202-A & 1302-A	Office	521	0	521
1202-B & 1302-B	Office	634	0	634
1203-A & 1303-A	Office	1439	0	1439
1203-B & 1303-B	Office	906	0	906
1204 & 1304	Office	762	0	762
1205 & 1305	Office	1148	0	1148
1206-A & 1306-A	Office	557	0	557
1206-B & 1306-B	Office	557	0	557
1207 & 1307	Office	698	0	698



**Disclaimer:**

1. Dimensions mentioned in floor plans are for unfinished room and the given dimensions exclude plaster, tile cladding and skirting thickness.
2. Balcony, Terrace and Common Toilet are not part of RERA carpet area, It is mentioned as additional carpet area.
3. Column location, offsets and sizes will be as per working detail drawings and may change as per sites condition.
4. Internal block work and column offsets are included in RERA carpet area.
5. The duct doors of the plumbing and AC ducts on the side of the showrooms and offices shall be made accessible to the maintenance staff whenever required.
6. The owners shall not permanently close the duct doors through any kind of wall cladding / panelling, as these ducts are required to be accessed for AC outdoor units maintenance and repairs of individual shops and offices as well.